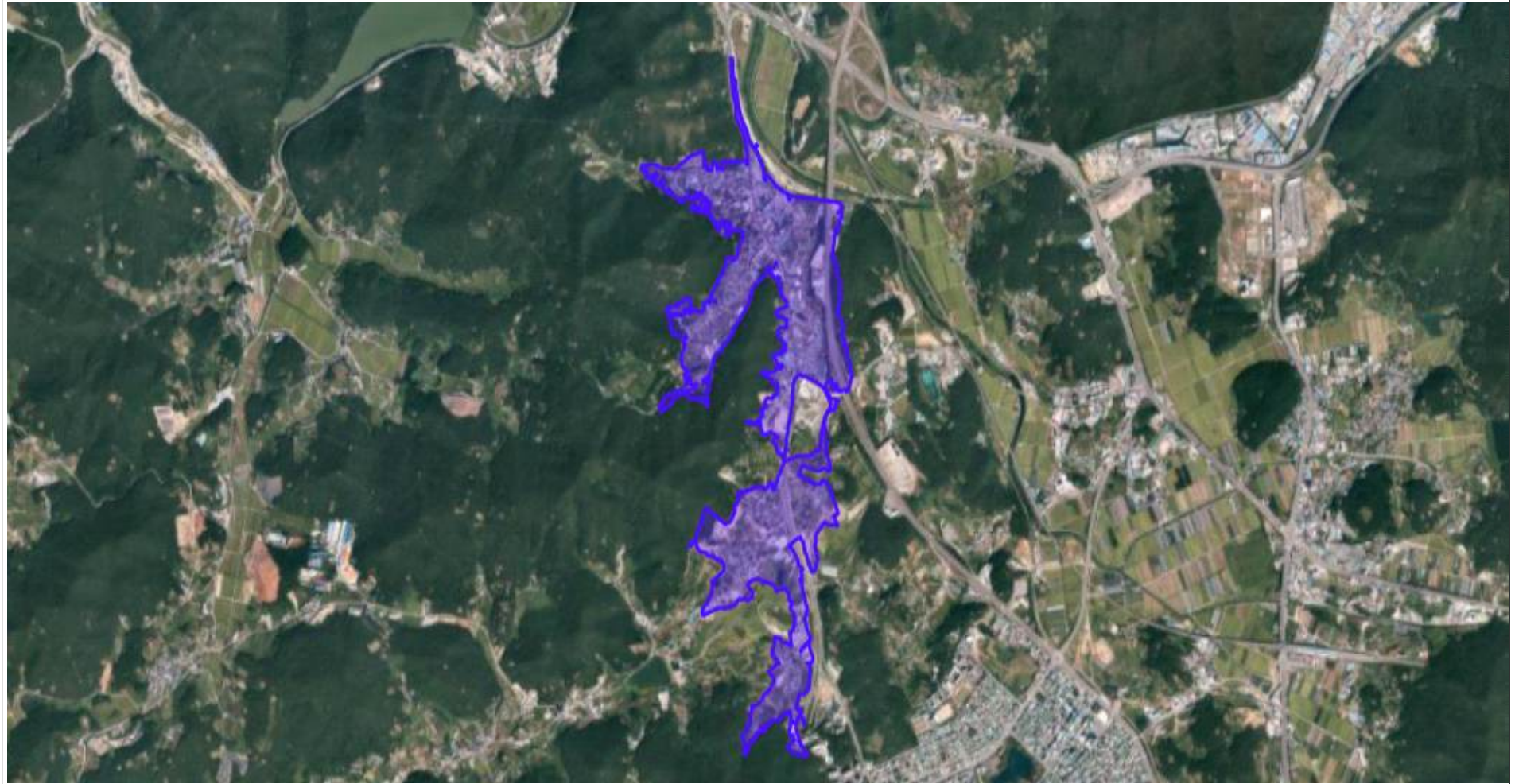


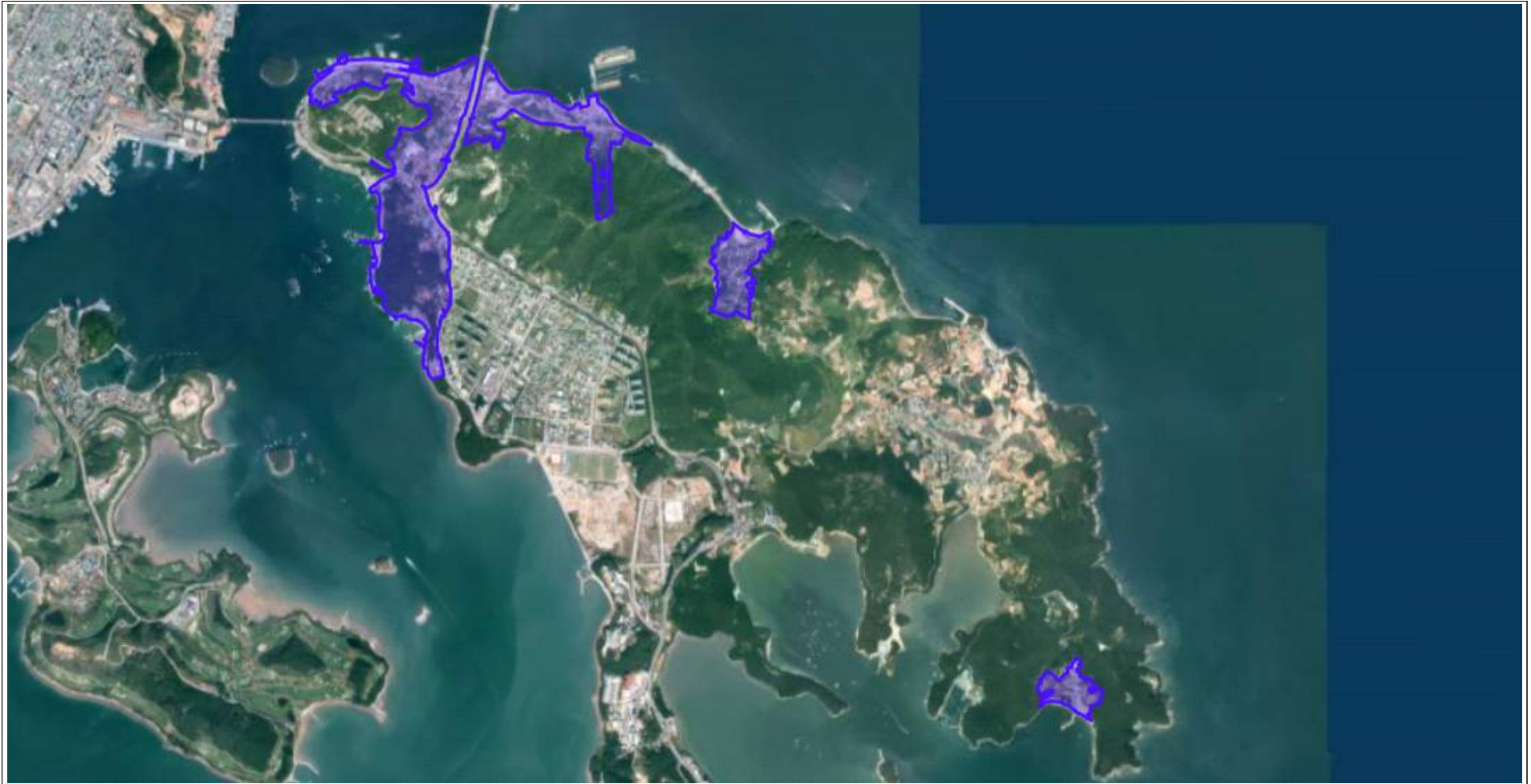
**지적재조사사업
순위별 사업지구
위치도**

1순위

1. 덕양지구(2,512필지 / 1,141,979m²)

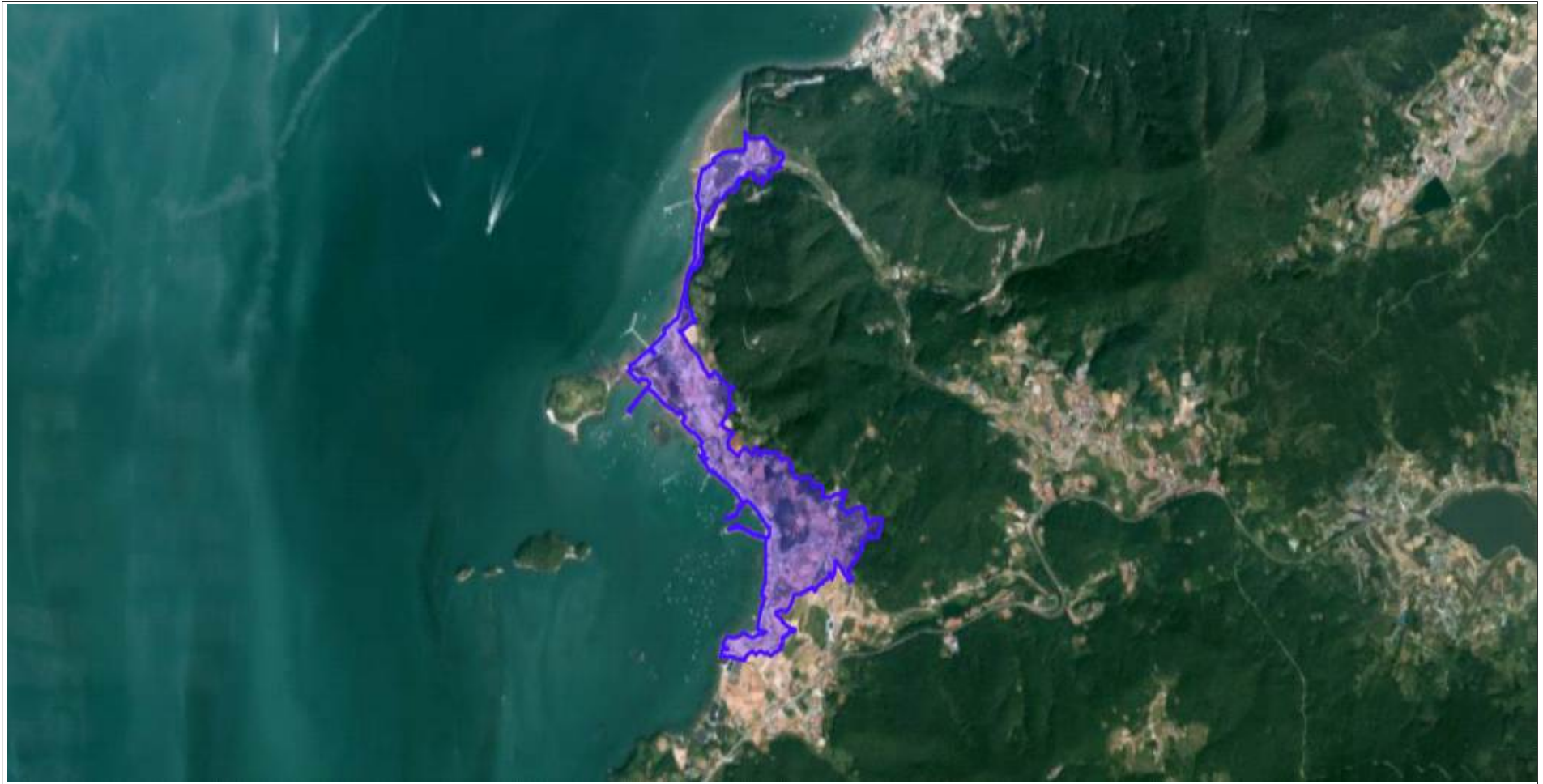


2. 우두지구(1,746필지 / 894,964m²)

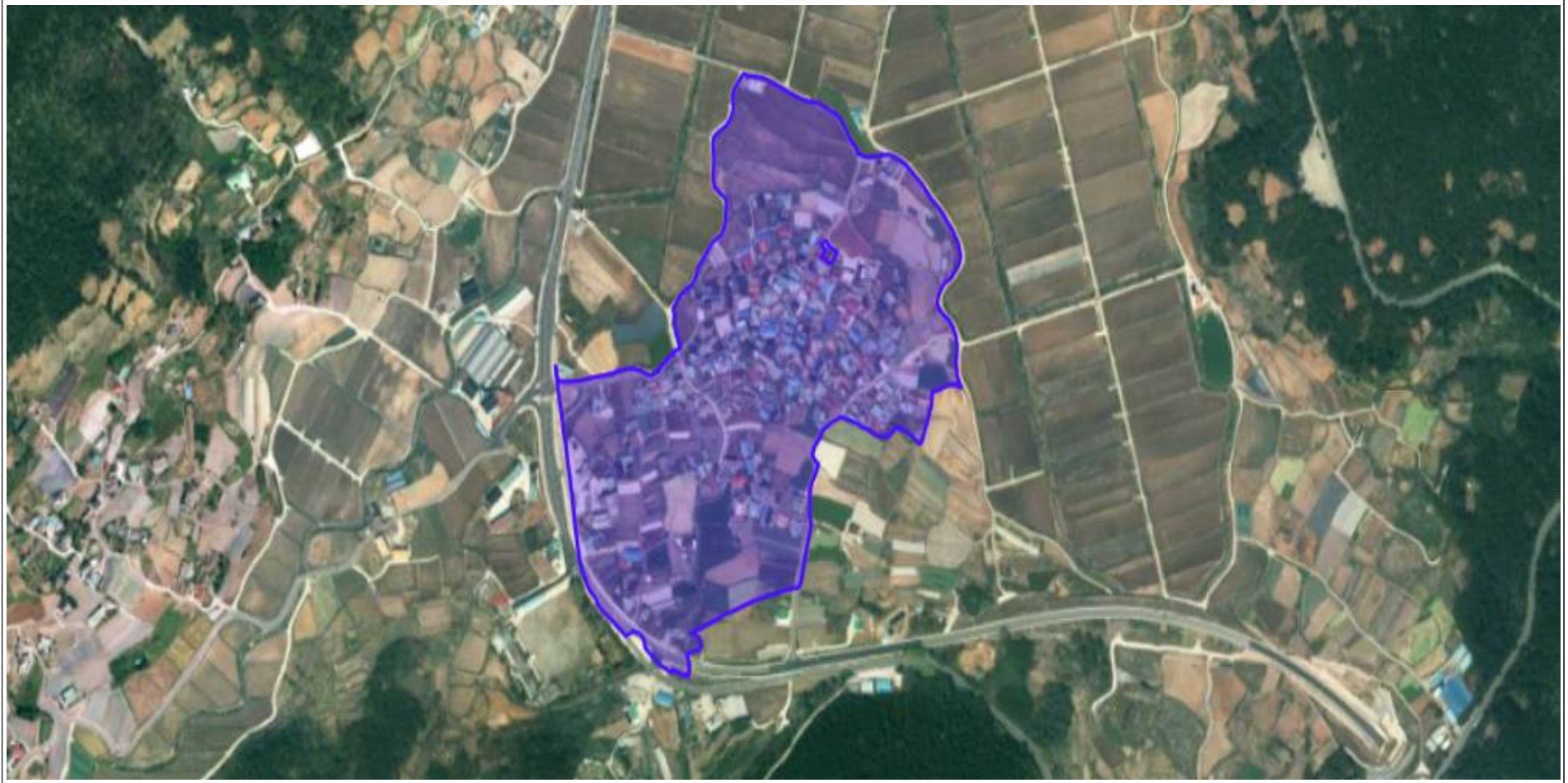




3. 금봉지구(1,493필지 / 593,731m²)



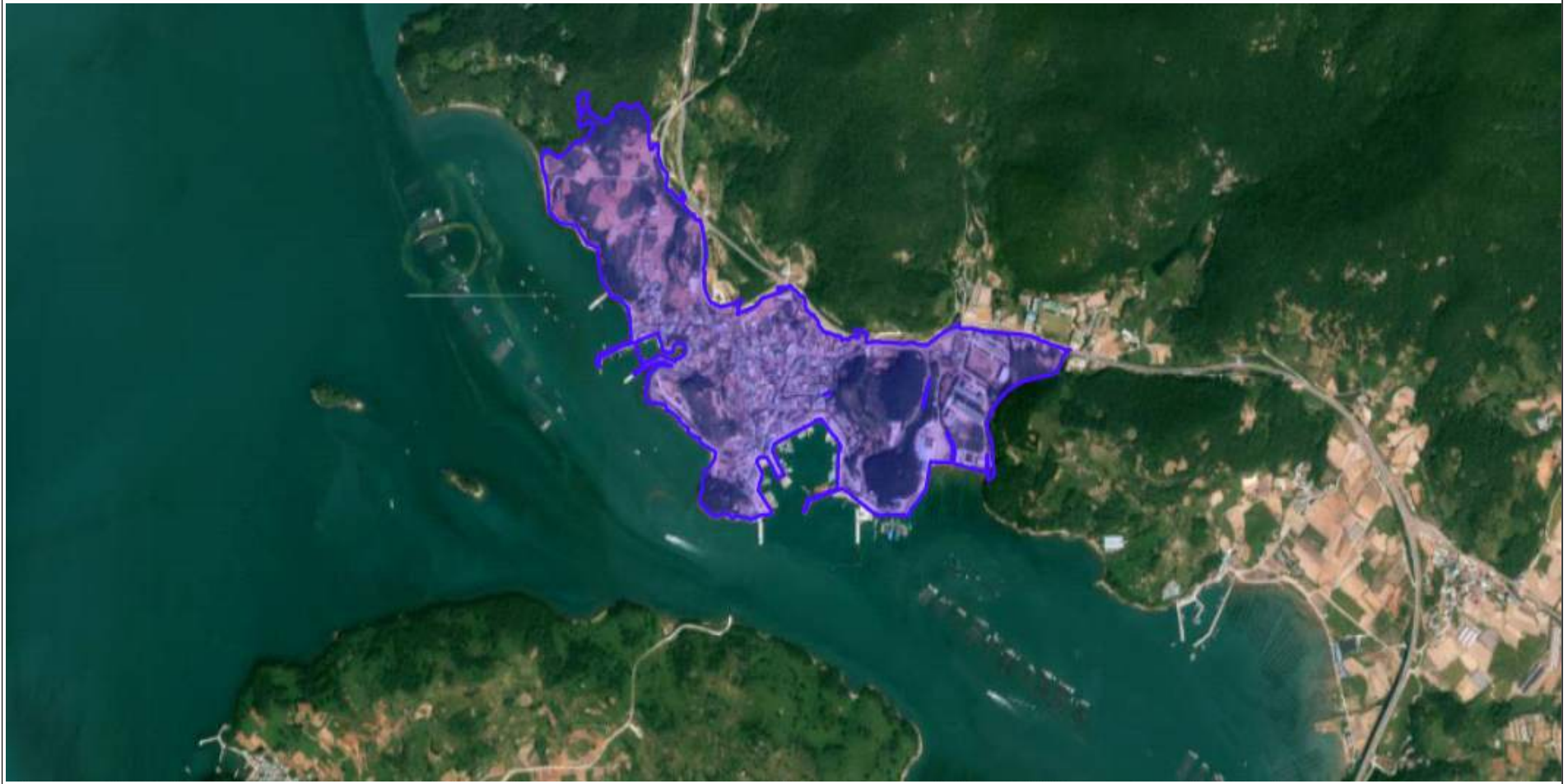
4. 둔전지구(614필지 / 170,452m²)



5. 평사지구(2,476필지 / 1,342,314m²)



6. 군내지구(1,381필지 / 475,082m²)



7. 금성지구(839필지 / 379,238m²)



8. 죽포지구(929필지 / 282,811m²)



2순위

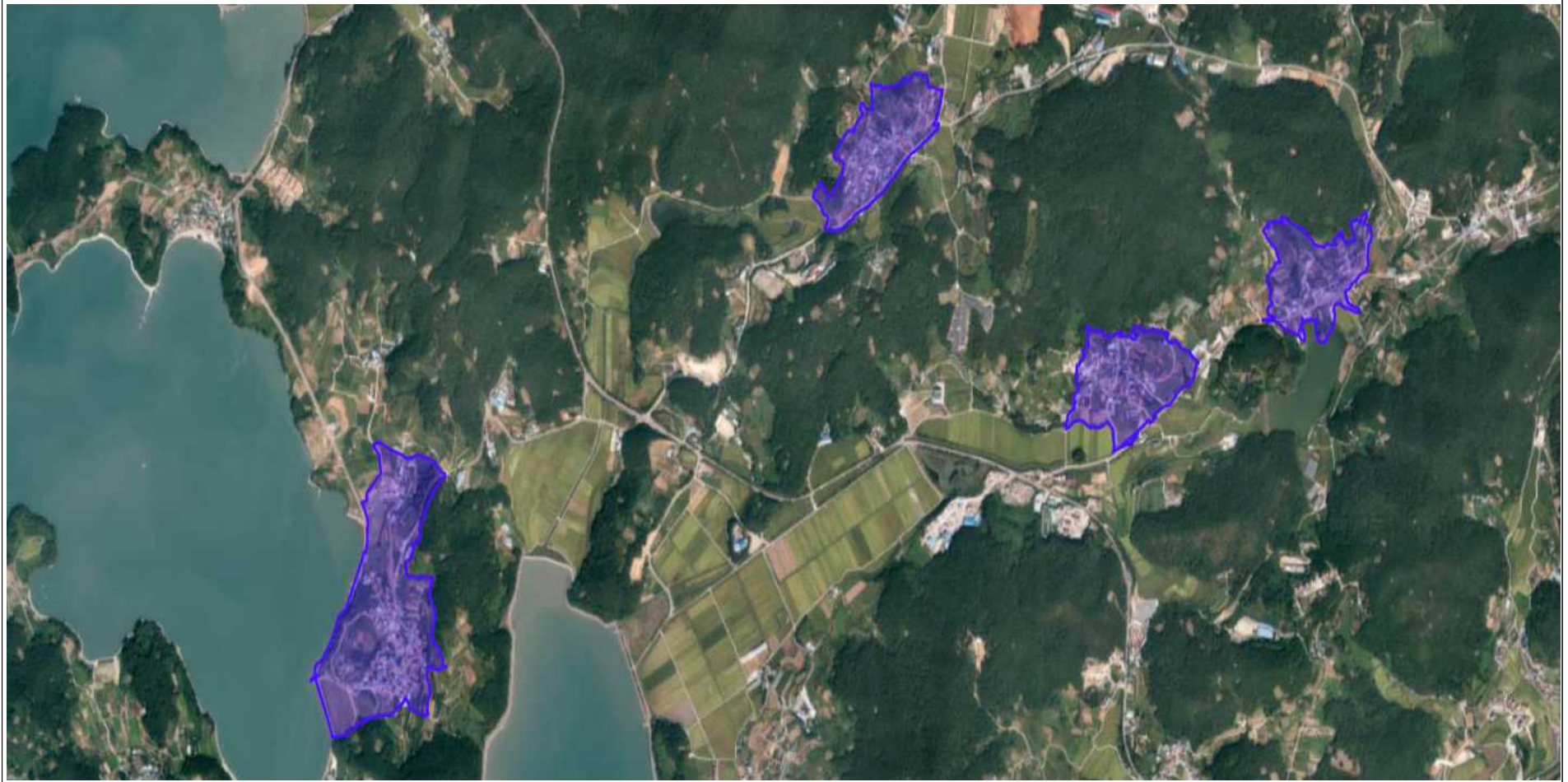
9. 관기지구(792필지 / 333,413m²)



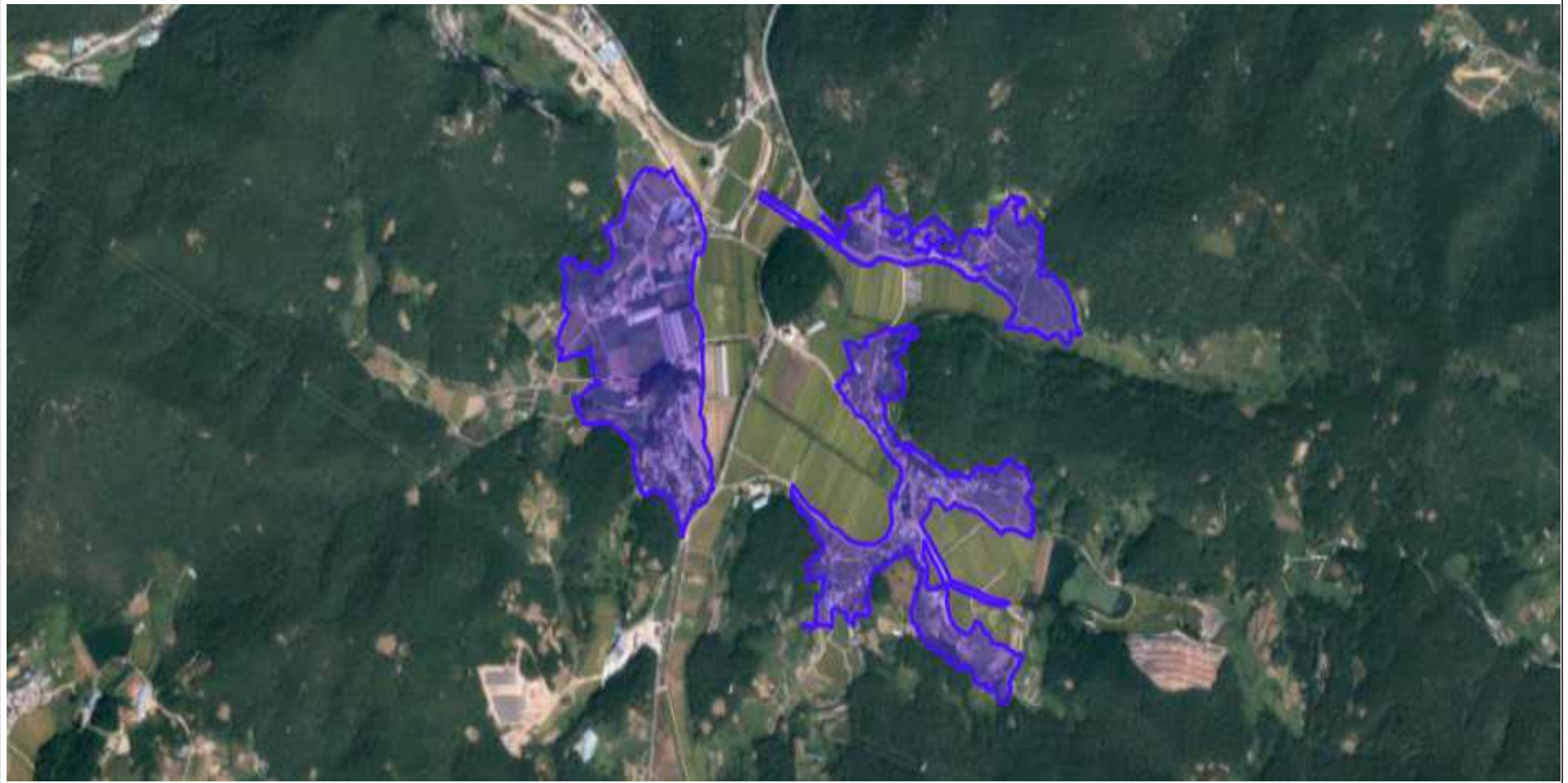
10. 군자지구(635필지 / 111,570m²)



11. 복산지구(1,051필지 / 492,056m²)



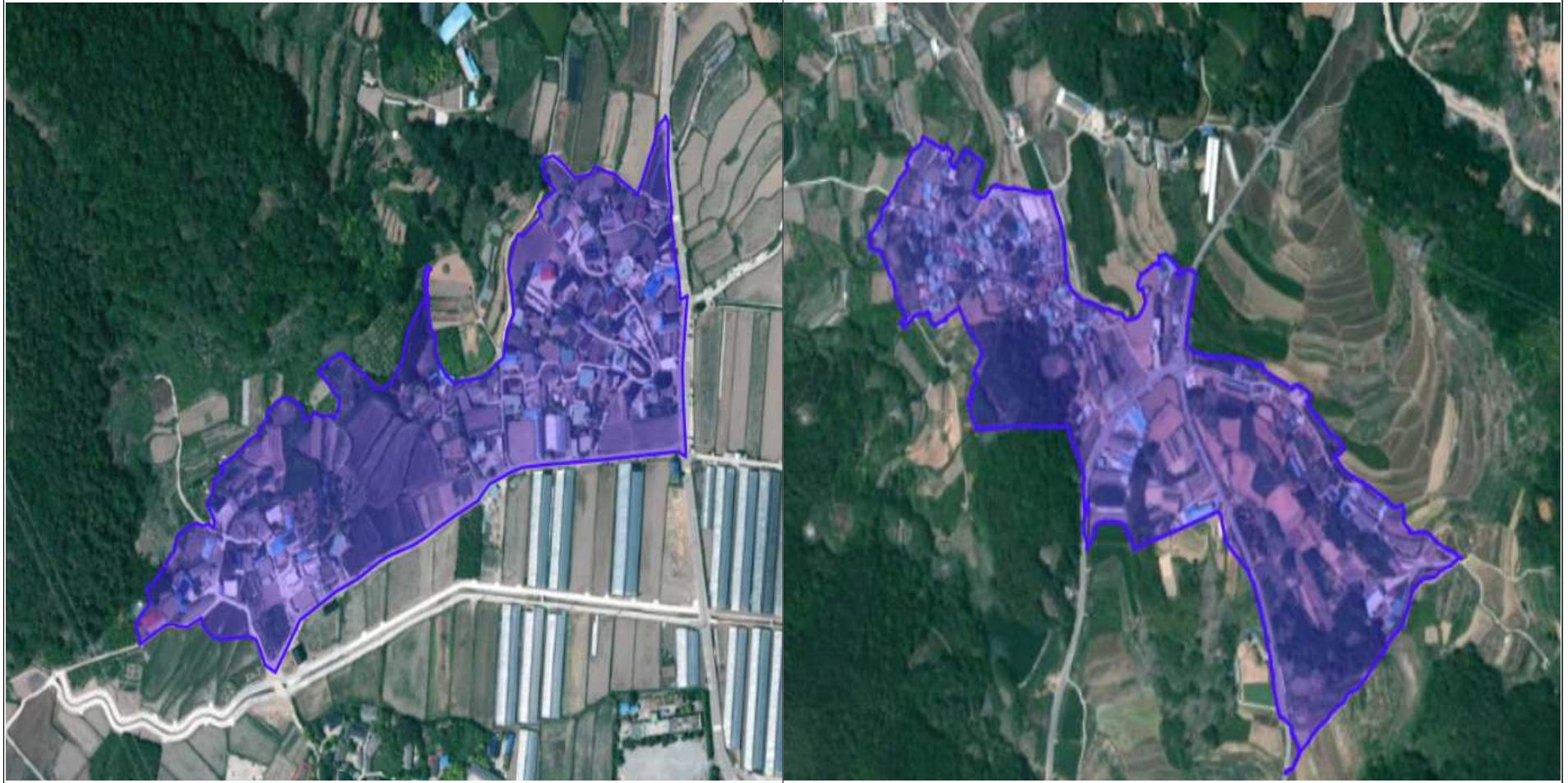
12. 봉두지구(659필지 / 327,549m²)



13. 사곡지구(1,595필지 / 886,828m²)



14. 산수지구(586필지 / 242,731m²)



15. 상암지구(912필지 / 427,891m²)



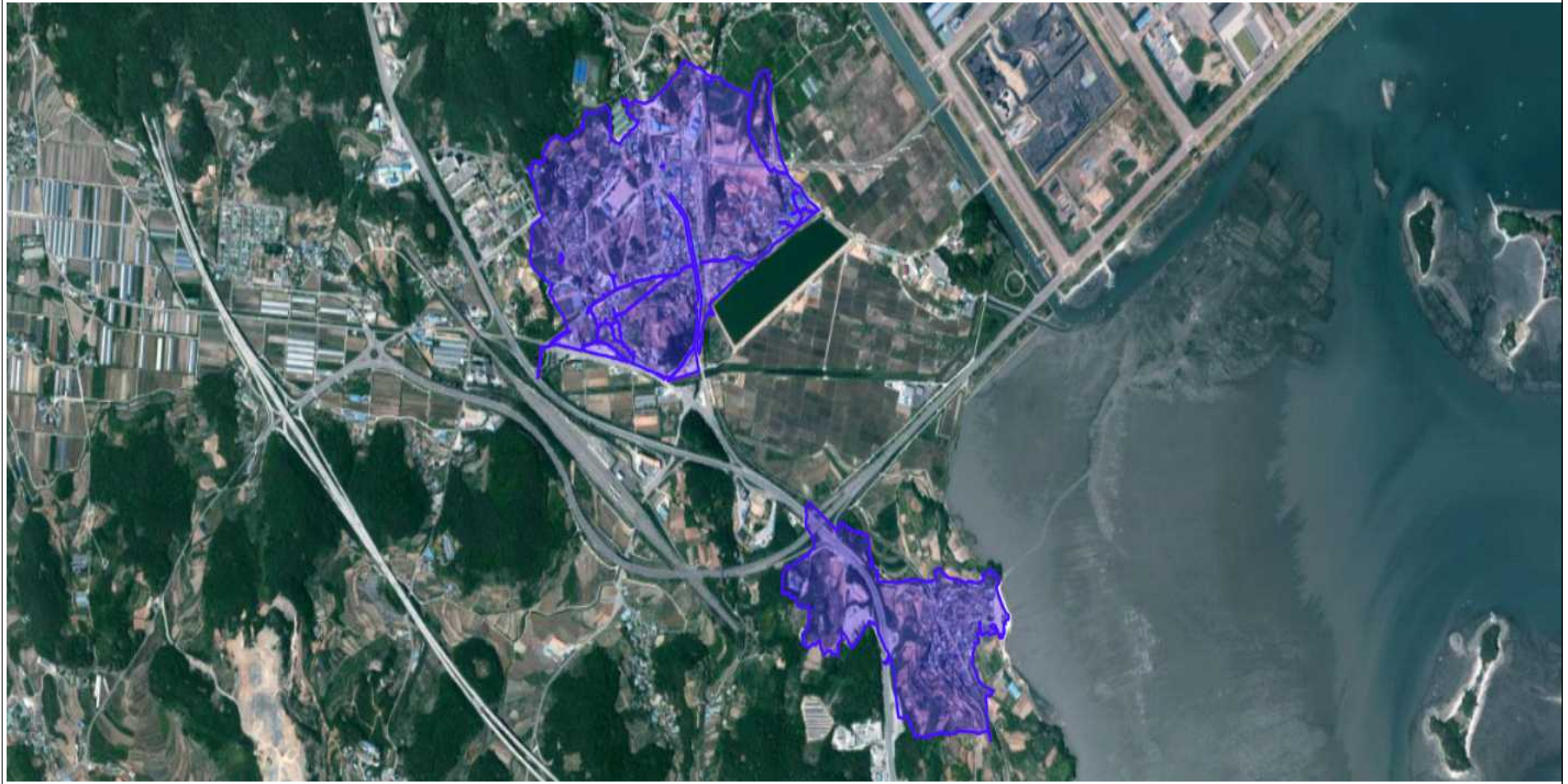
16. 신덕지구(511필지 / 164,876m²)



17. 신흥지구(2,370필지 / 1,448,530m²)



18. 조화지구(1,983필지 / 809,818m²)



19. 취적지구(1,766필지 / 1,272,213m²)

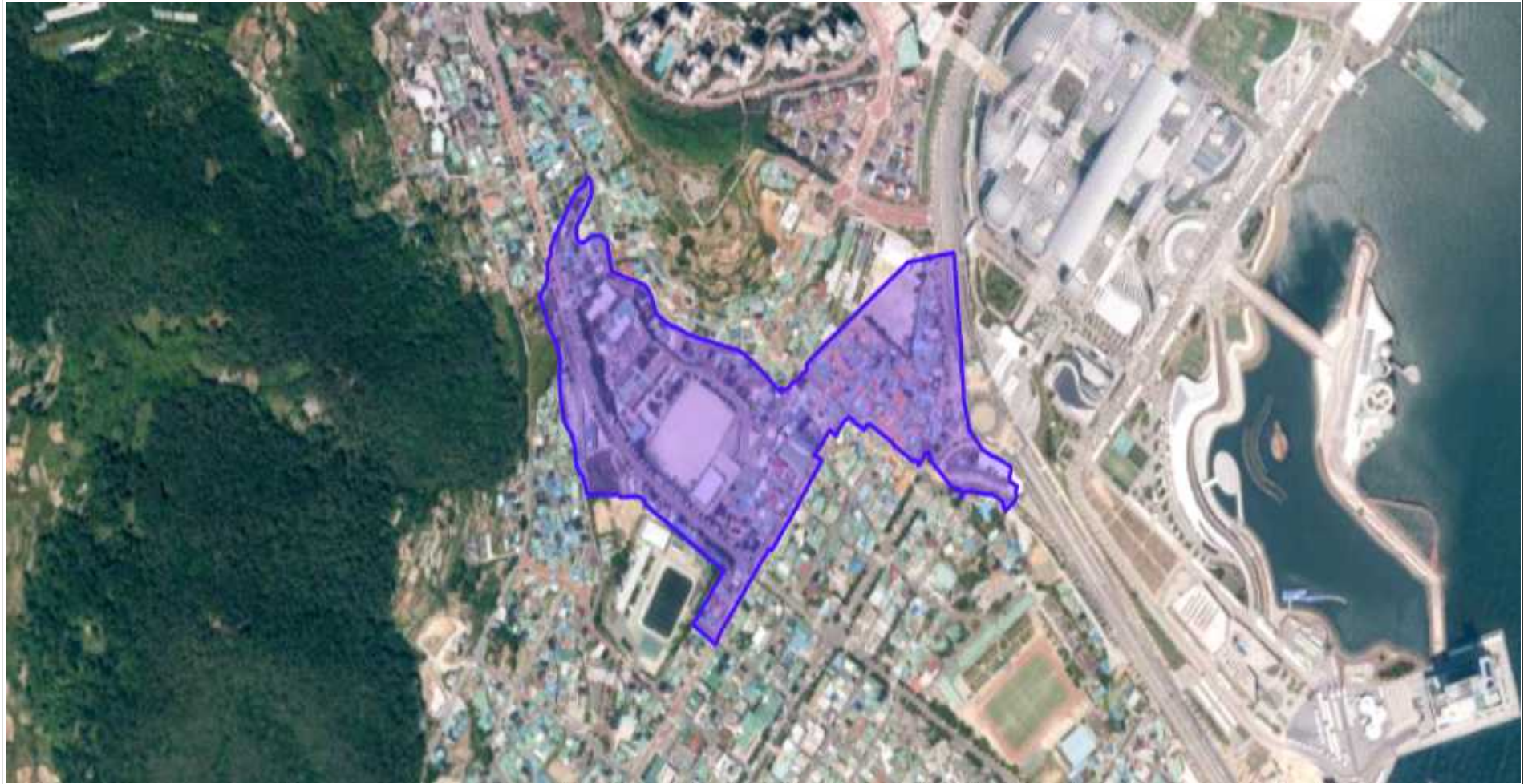


3순 위

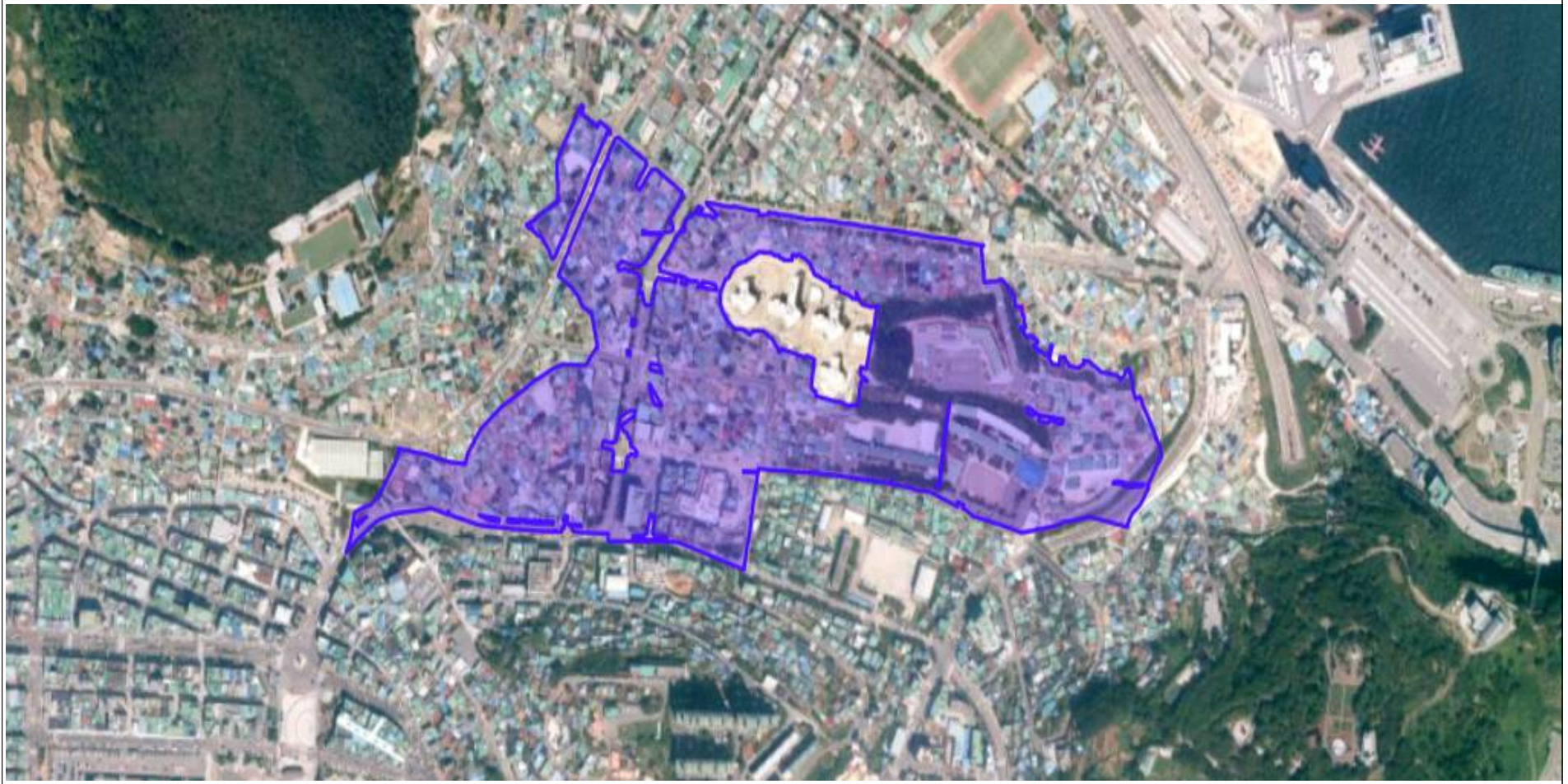
20. 고소지구(1,297필지 / 151,508m²)



21. 공화지구(695필지 / 104,274m²)



22. 관문지구(1,526필지 / 229,317m²)



23. 광무지구(2,350필지 / 380,374m²)



24. 교동지구(506필지 / 57,335m²)



25. 국동지구(1,995필지 / 526,645m²)



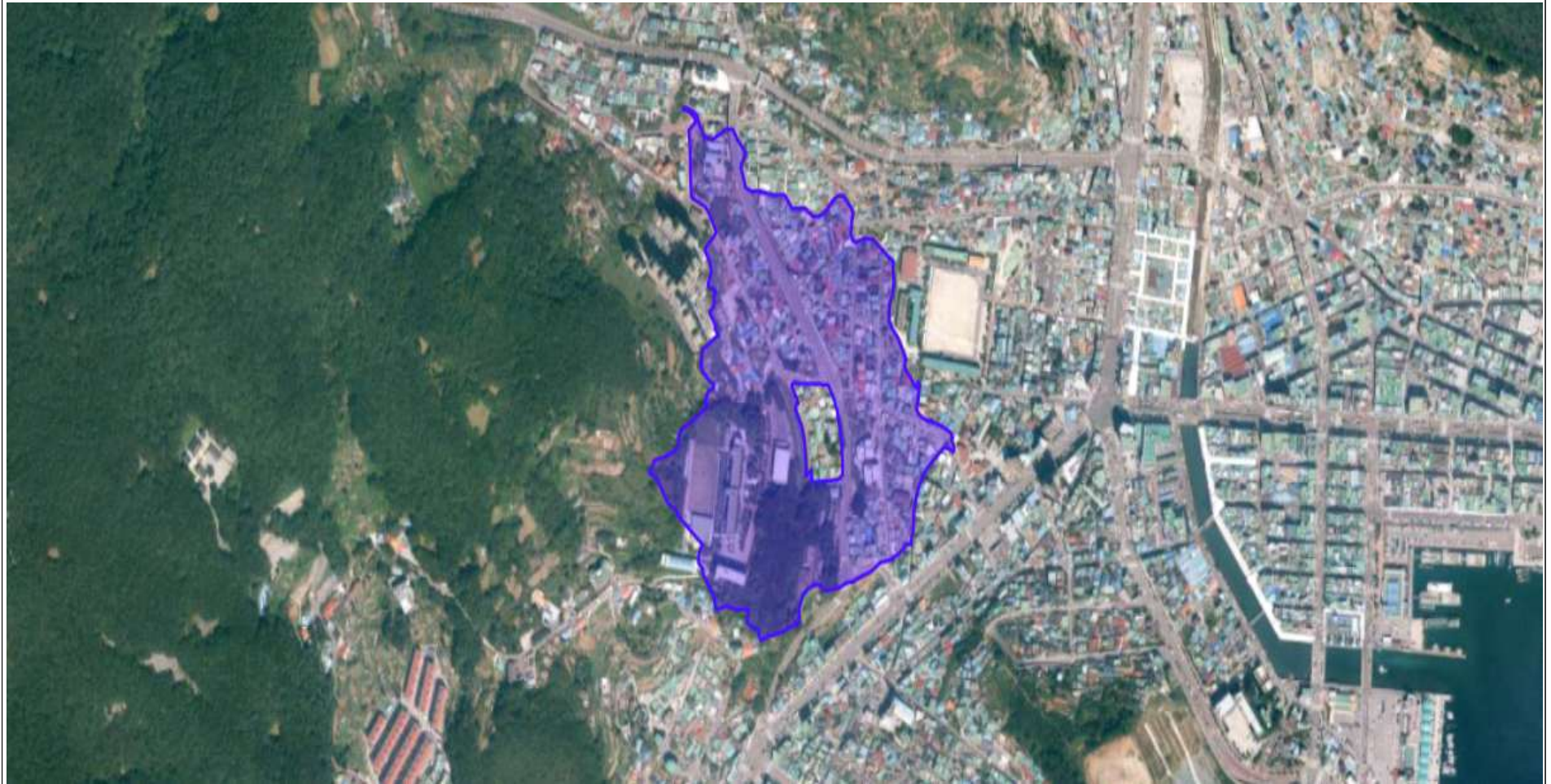
26. 남산지구(1,591필지 / 217,467m²)



27. 동산지구(1,217필지 / 139,352m²)



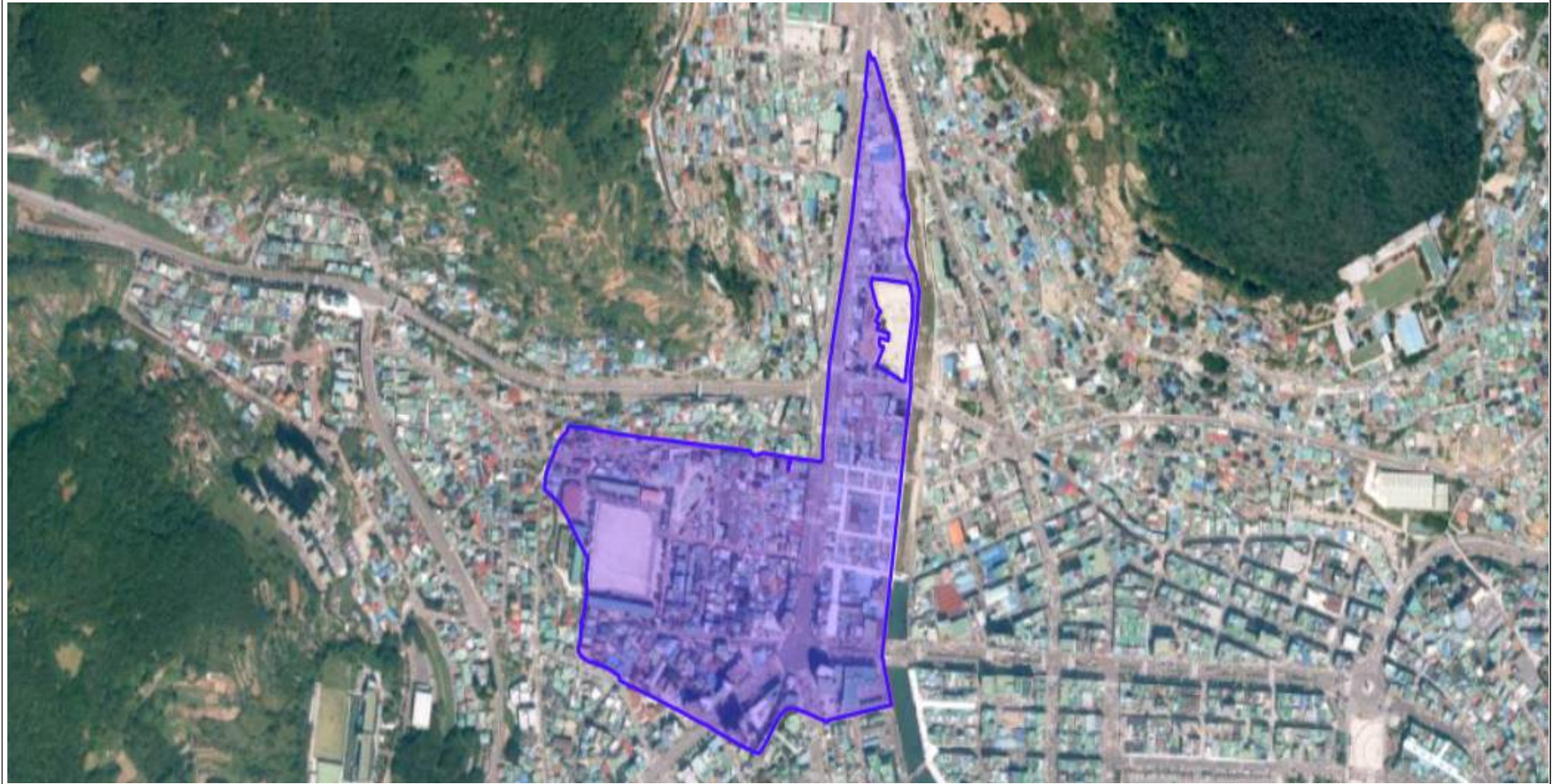
28. 봉강지구(738필지 / 153,989m²)



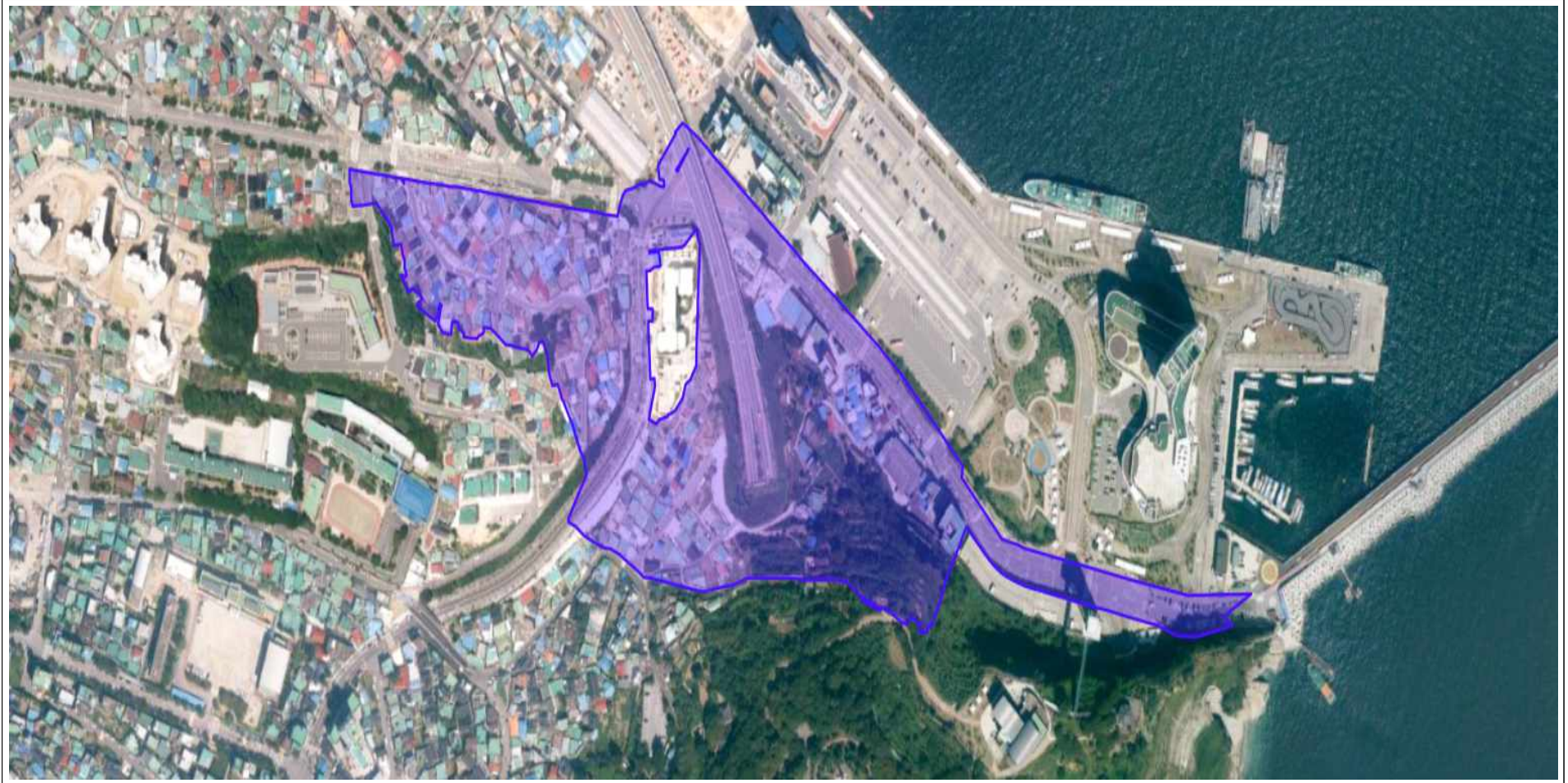
29. 봉산지구(1,588필지 / 329,722m²)



30. 서교지구(1,134필지 / 153,587m²)



31. 수정지구(697필지 / 114,183m²)



32. 신월지구(1,120필지 / 348,789m²)



33. 연등지구(1,377필지 / 250,828m²)



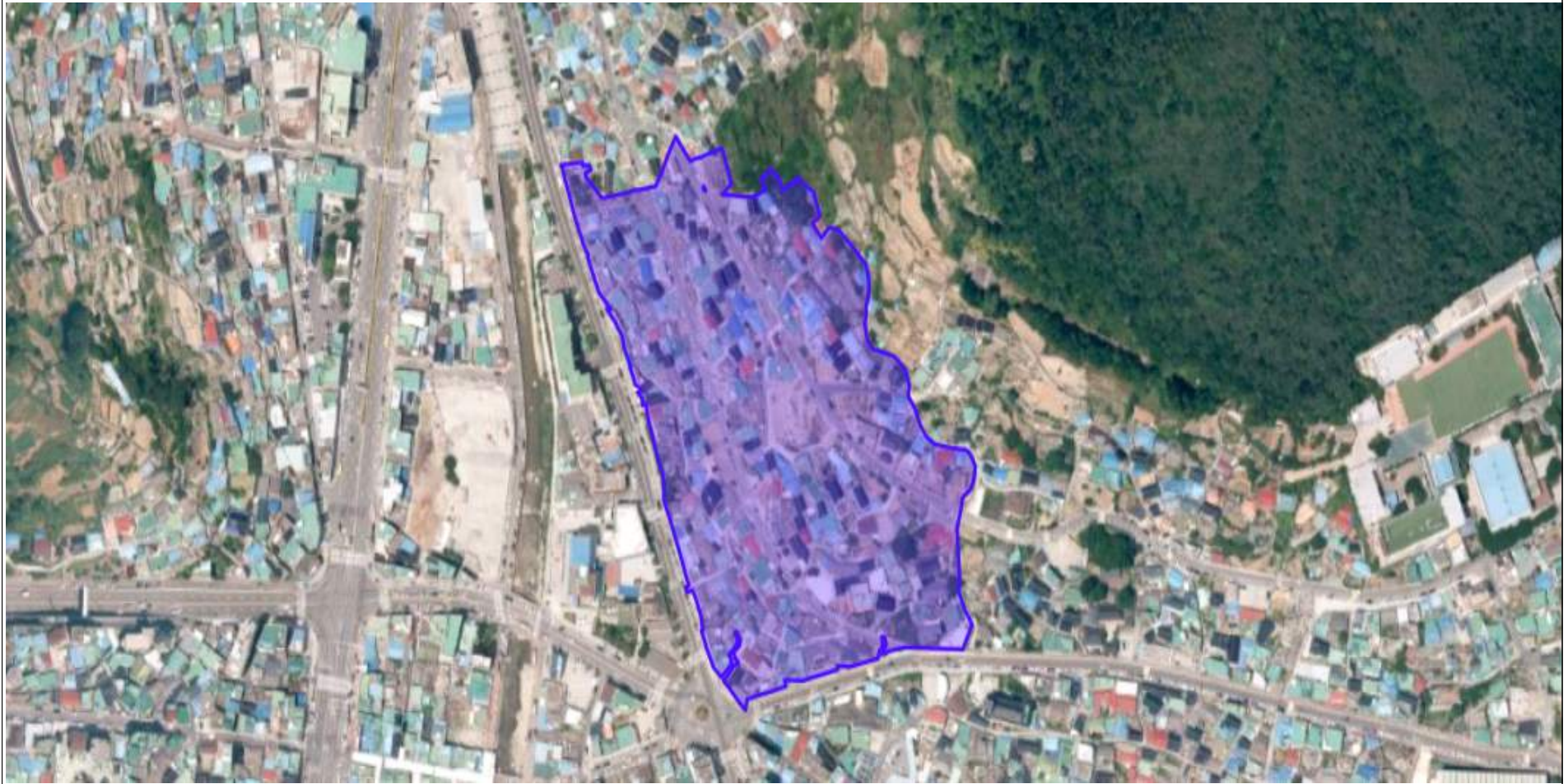
34. 종화지구(1,420필지 / 259,250m²)



35. 중앙지구(797필지 / 141,357m²)



36. 충무지구(521필지 / 48,584m²)

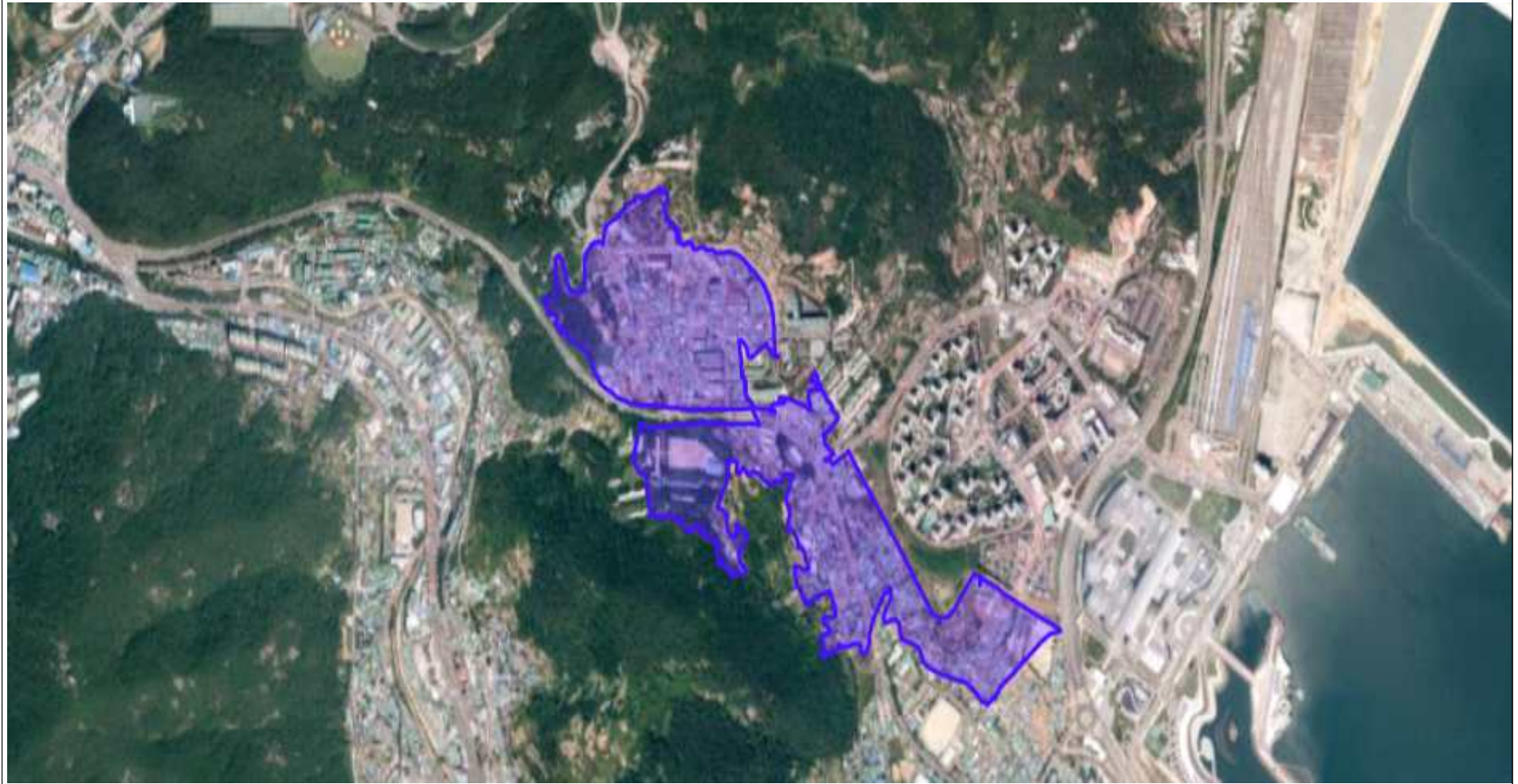


4순위

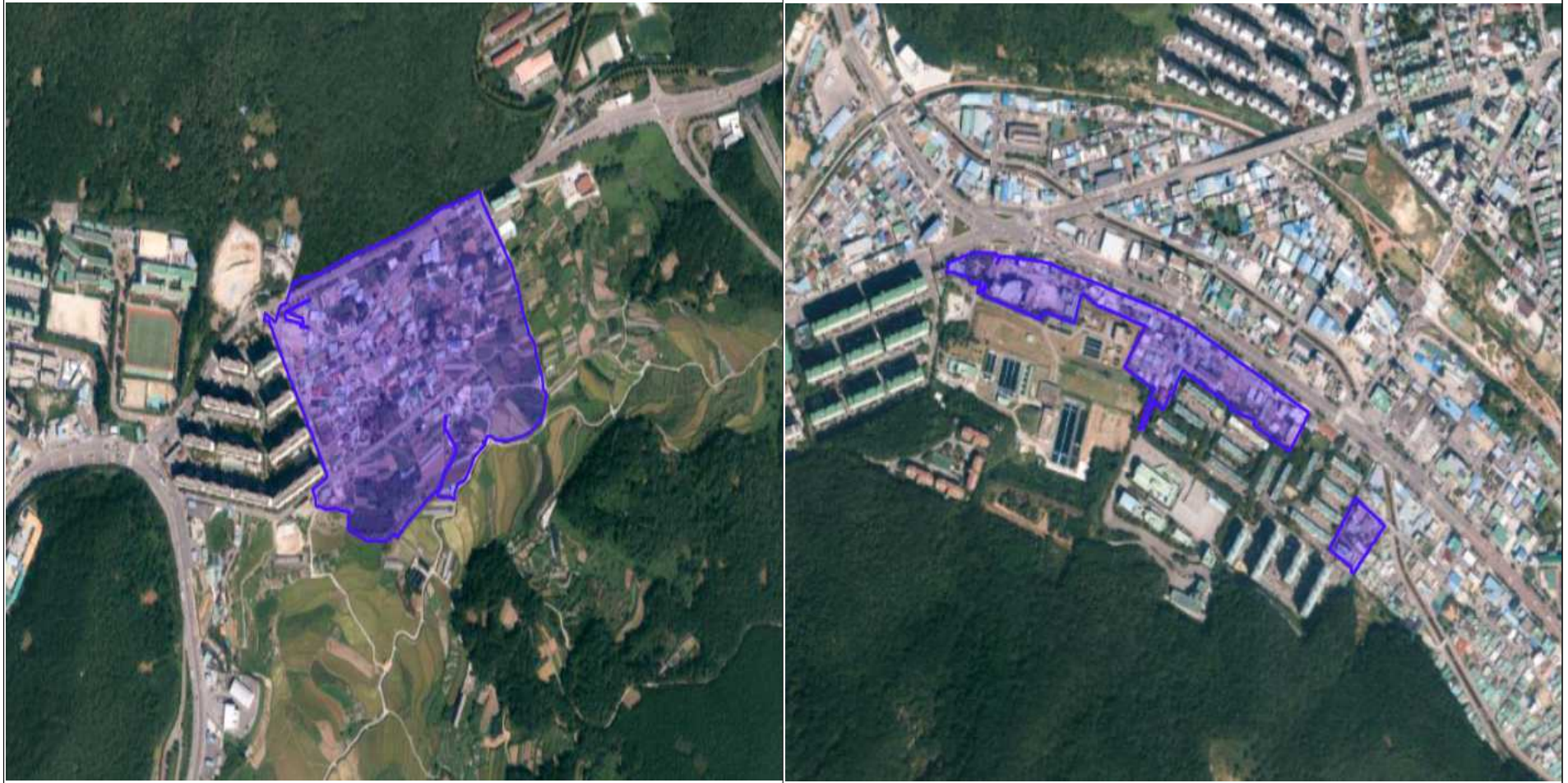
37. 나진지구(624필지 / 399,010m²)



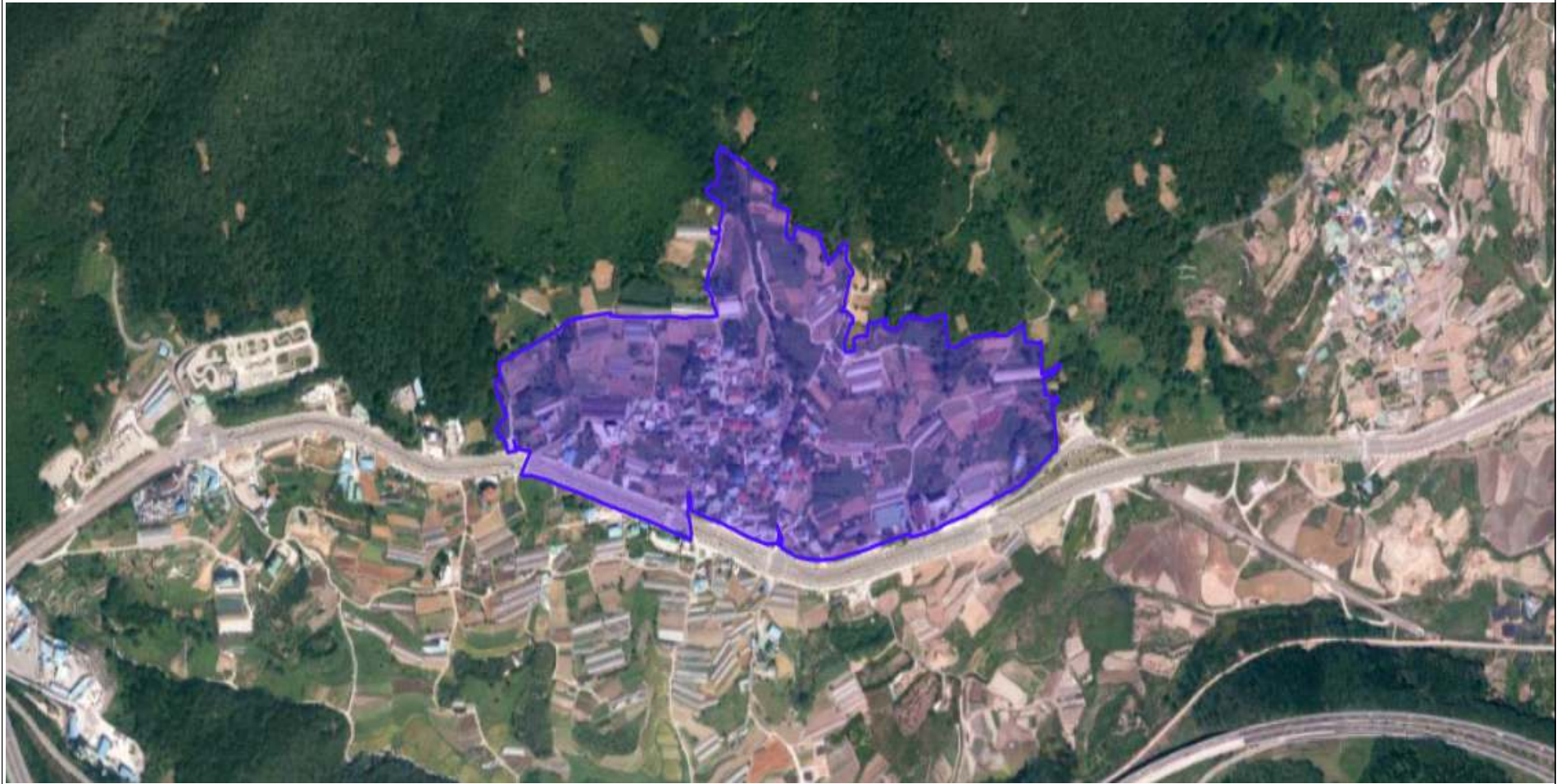
38. 덕충지구(1,521필지 / 345,040m²)



39. 둔덕지구(580필지 / 177,897m²)



40. 만흥지구(379필지 / 200,916m²)



41. 묘도지구(655필지 / 371,742m²)



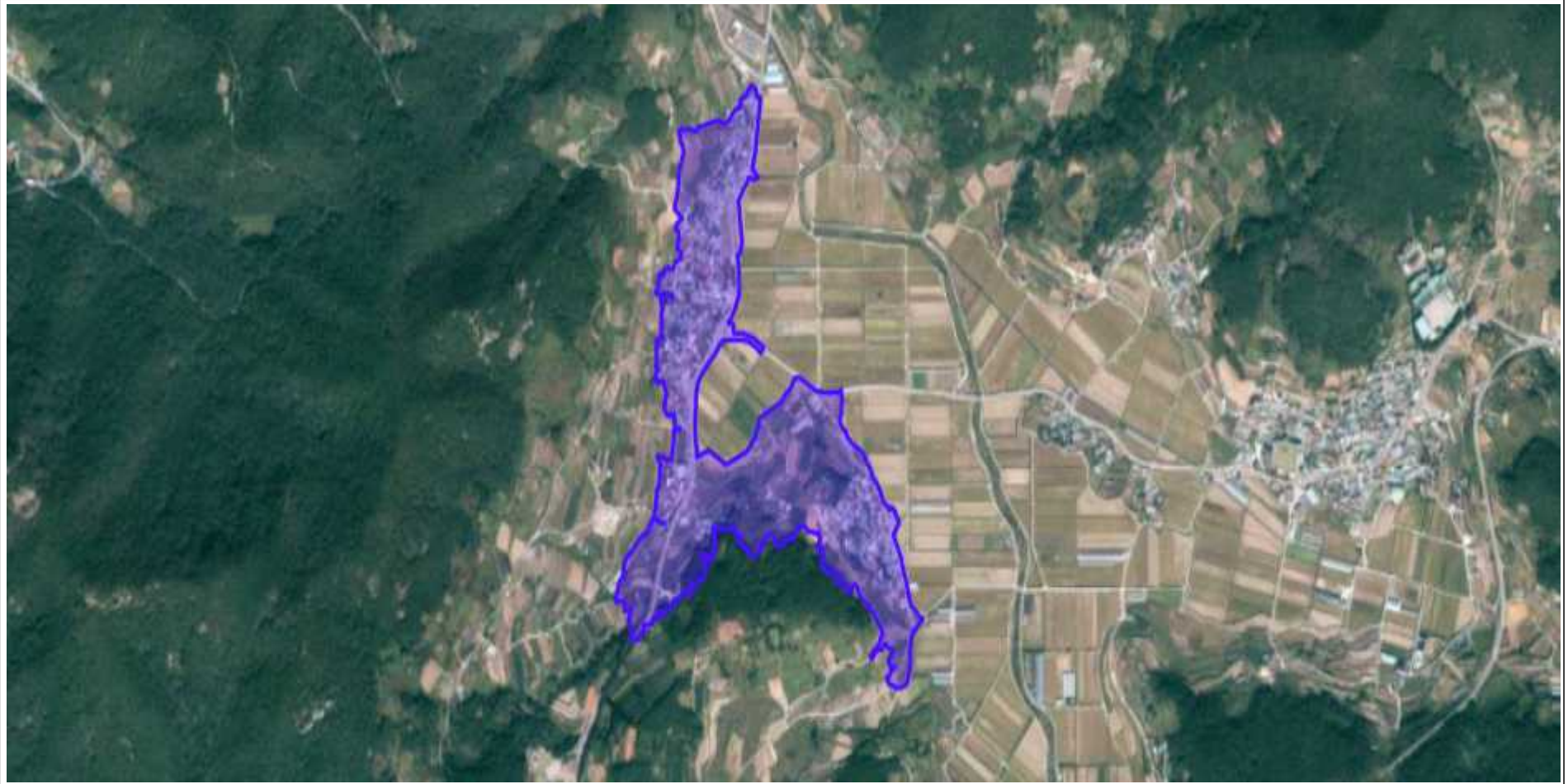
42. 미평지구(987필지 / 235,039m²)



43. 봉계지구(1,069필지 / 406,704m²)



44. 서촌지구(784필지 / 253,223m²)



45. 안포지구(1,358필지 / 801,784m²)



46. 여천지구(406필지 / 264,366m²)



47. 오림지구(650필지 / 166,679m²)



48. 오천지구(732필지 / 254,878m²)



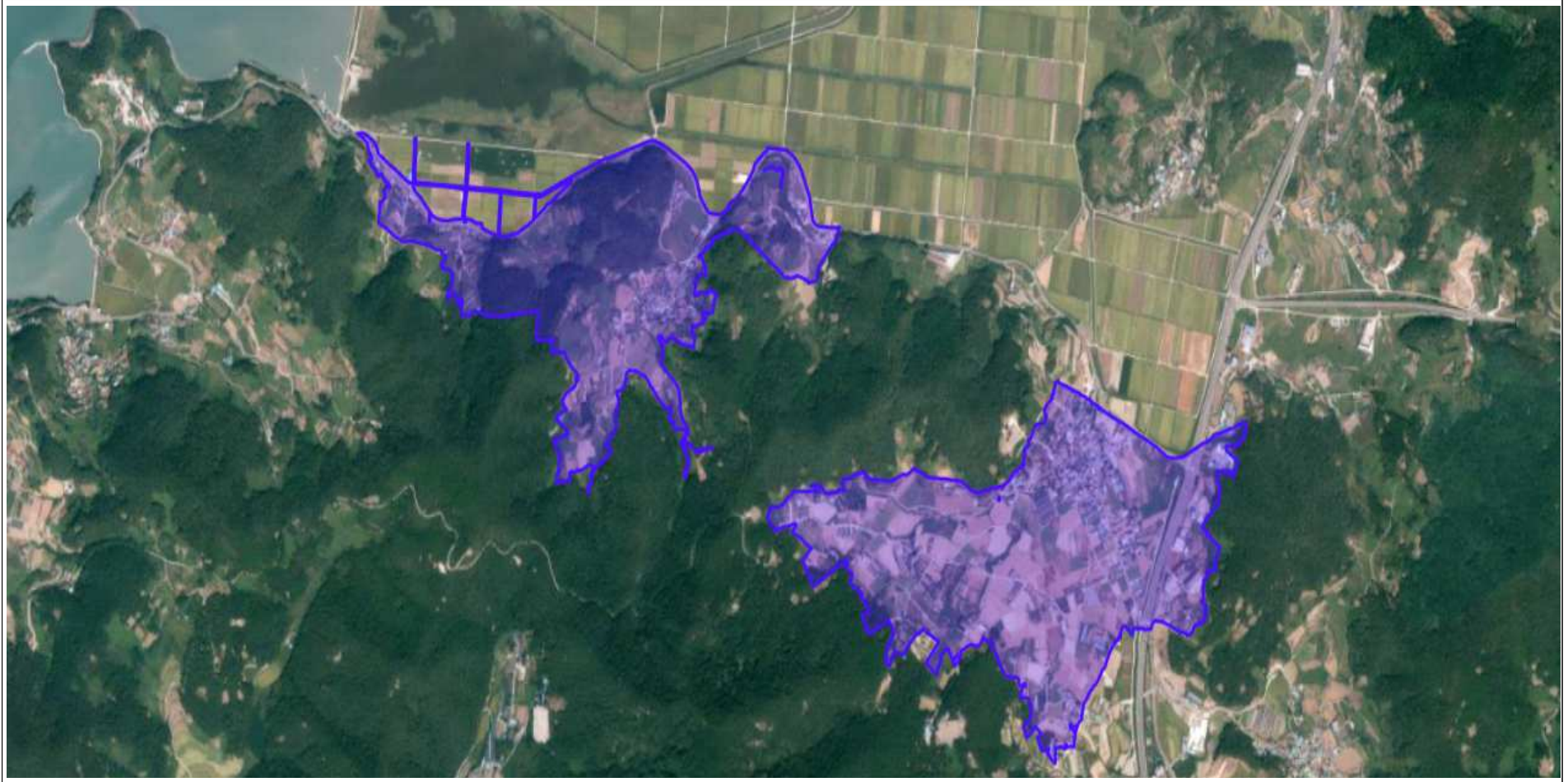
49. 용주지구(1,756필지 / 1,002,879m²)



50. 이목지구(1,436필지 / 1,058,962m²)



51. 창무지구(1,710필지 / 1,166,139m²)



52. 화동지구(946필지 / 285,408m²)

